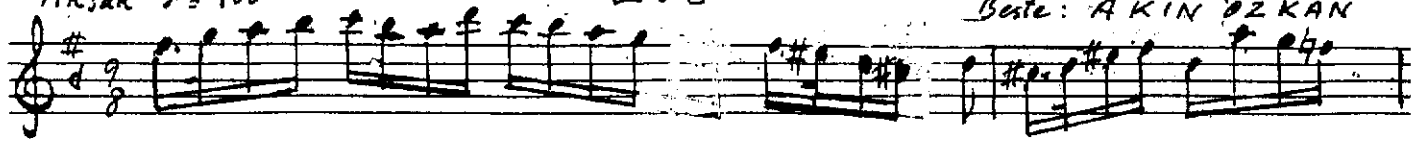


Aksak  $\delta = 100$ 

E=VC

Söz: Mehmet Tunc Yaran  
Beste: AKIN ÖZKAN

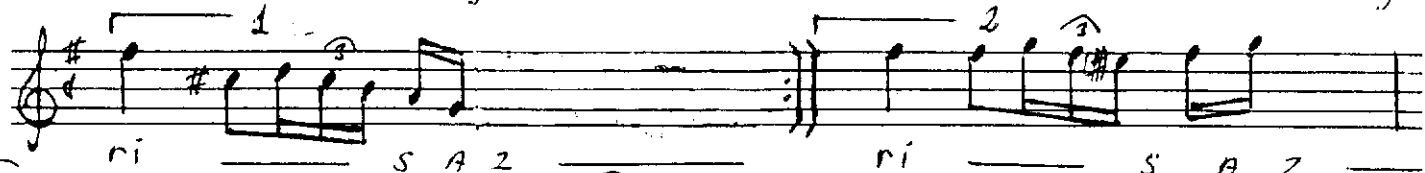
Ka ra bah tım



di ye ah ey

Le menin var

mı ye



ri S A 2

ri S A 2

He Le bir par  
A gö nül sabça dü şün  
ra da yan her  
dikke de rin var  
ça ye ner sinbe te ri  
ka de ri

S A 2

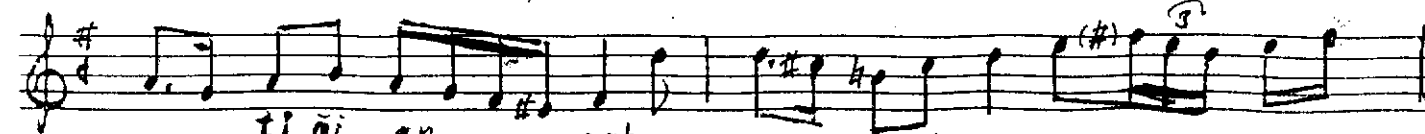
He Le bir par  
A gö nül sabça dü şün  
ra da yan her  
dikke de rin  
ça ye ner sinbe te ri  
ka de ri (son)

S A 2



A ci gün Ler

de gü cün bit



ti gi an sab

ra da yan S A 2

Handwritten musical notation on two staves. The top staff is in treble clef with a key signature of one sharp (F#). The bottom staff is in treble clef with a key signature of one sharp (F#). The lyrics are written below the notes.

A eı gün Ler de gü cün bit  
ti ği an sab ra da yan — S A Z —

268/3 - 25.12.1997

KARA BAHTIM DİYE AH EYLEMENİN VAR MI YERİ  
HELE BİR PARÇA DÜŞÜN, HER KEDERİN VAR BETERİ  
ACI GÜNLERDE GÜCÜN BİTTİĞİ AN SABRA DAYAN  
A GÖNÜL SABRA DAYANDIKÇA YENERSİN KADERİ